

OUR MODULAR SYSTEM MAKES SOLVING YOUR PERSONAL HOUSING PUZZLE AS EASY AS A + B + C.

Our architects and scientists will guide you through the design process.

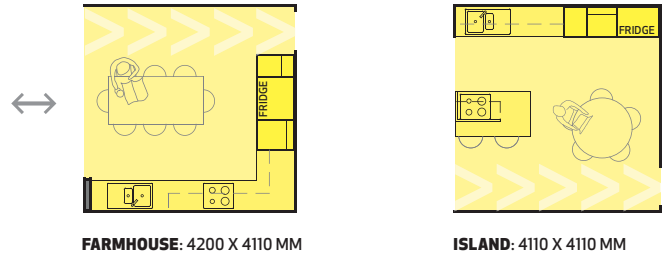
# Match your brief to your block

Start by considering what type of modules you want in your home—enjoy imagining which options suit your family and lifestyle best. Let us know what features are important to you and why.



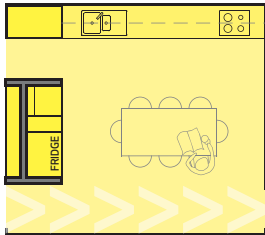
# Living modules

## CORE KITCHEN/DINING MODULES

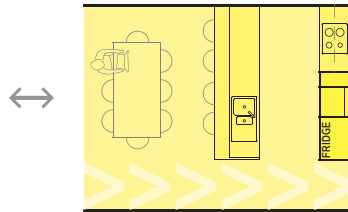


**FARMHOUSE:** 4200 X 4110 MM

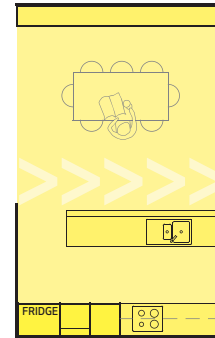
**ISLAND:** 4110 X 4110 MM



**HUB** (ALIGNS TO THE **FULL HOUSE** LOUNGE): 5170 X 4580 MM

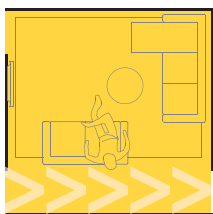


**MISSION CONTROL:** 5355 X 4110 MM

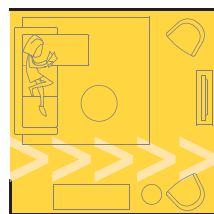


**ENTERTAINER:** 4095 X 6635 MM

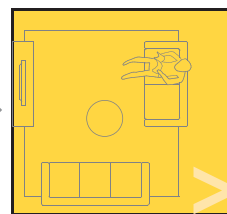
## CORE LOUNGE MODULES



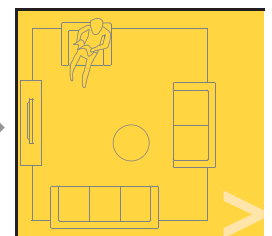
**TUCKAWAY:** 4110 X 4110 MM



**COLLECTOR:** 4110 X 4110 MM

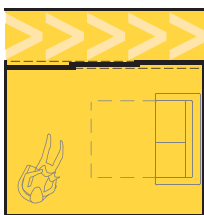


**NEST:** 4455 X 4110 MM

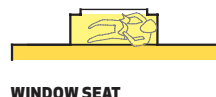


**FULL HOUSE** (ALIGNS TO THE **HUB** KITCHEN): 4925 X 4580 MM

## ADD-ON LIVING MODULES



**FLEXI-ROOM** (RUMPUS/STUDY/GUEST ROOM): 3960 X 2935 MM



**WINDOW SEAT**



**INBUILT UNIT**



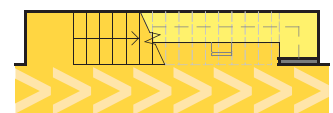
**INBUILT SHELF**



**ENTRY + FIREPLACE:** 4110 X 1300 MM



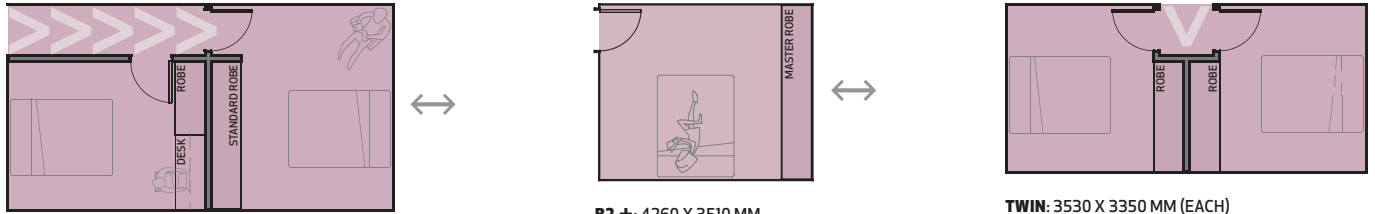
**ENTRY:** 1550 X 2495 MM



**STAIRCASE + STUDY UNDER:** 5560 X 1015 MM

# Sleeping modules

## CORE SLEEPING MODULES



## ADD-ON SLEEPING MODULES



See more modular plan examples at [www.jigsawhousing.com.au](http://www.jigsawhousing.com.au)

Once you have chosen the modules you need, and have considered your favourite variations, the Jigsaw team will configure them into a home to suit your lifestyle and your block. As our architects refine the design, and our scientists optimise the thermal performance, we may find that it makes sense to change rooms slightly, or use a variation of a module. The Jigsaw team will guide you through this process to ensure the most livable, sustainable and affordable solution to your personal housing puzzle.

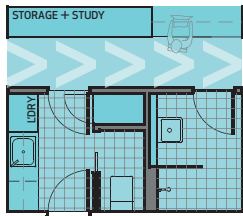
## CONNECTION AND FLEXIBILITY

The string of arrowheads on the modules indicate circulation through the rooms and where modules can connect. >>>>>>>>>>>>>>>>

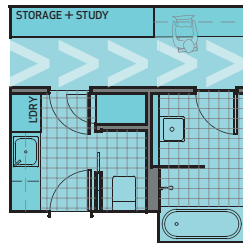
The double sided arrows beside modules indicate the places where room sizes can be changed most easily. <=>

# Utility modules

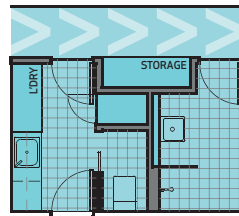
## CORE BATHROOM/LAUNDRY MODULES



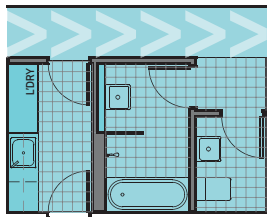
**PIVOT:** 4675 X 4110 MM



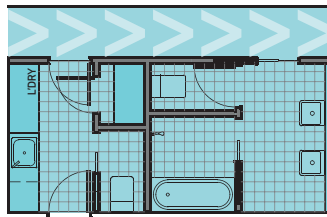
**PIVOT BATH:** 4675 X 4110 + 700MM BATH



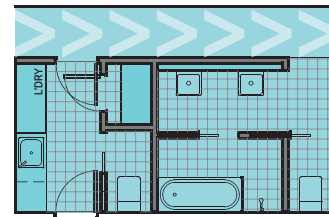
**SHIFT:** 4675 X 4110MM



**TRIO:** 5175 X 4110 MM

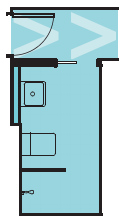


**TIME AND PLACE:** 6465 X 4110 MM

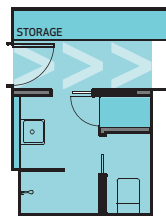


**PLACE AND TIME:** 6360 X 4110 MM

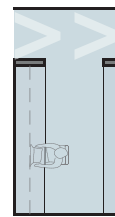
## ADD-ON UTILITY MODULES



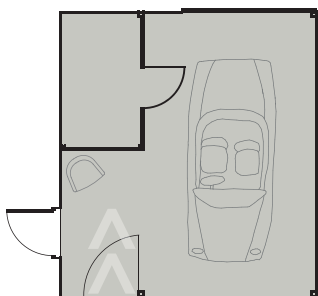
**ENSUITE 1:**  
1630 X 2985 MM + HALLWAY



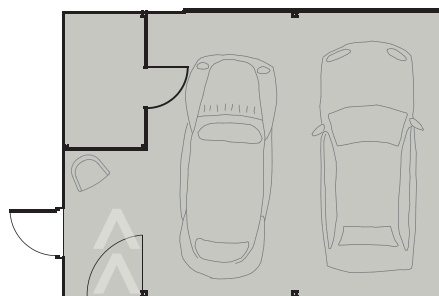
**ENSUITE 2:** 2650 X 2385 MM  
+ HALLWAY + ROBE



**STUDY:** 2130 X 3075 MM



**SINGLE CARPORT + STORAGE + ENTRY**



**DOUBLE CARPORT + STORAGE + ENTRY**