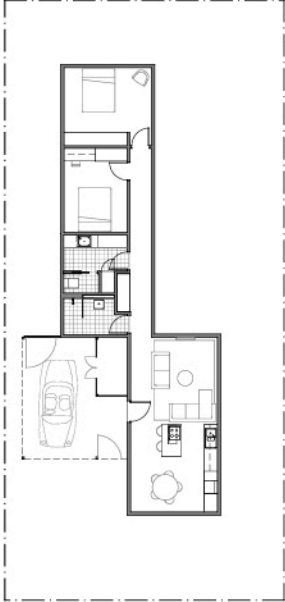


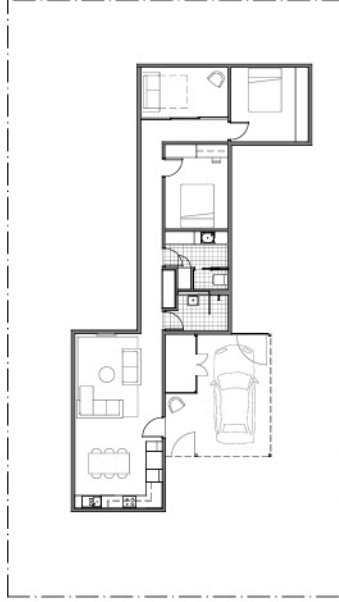
Sample block dimensions.
House floor area does not
include carport.



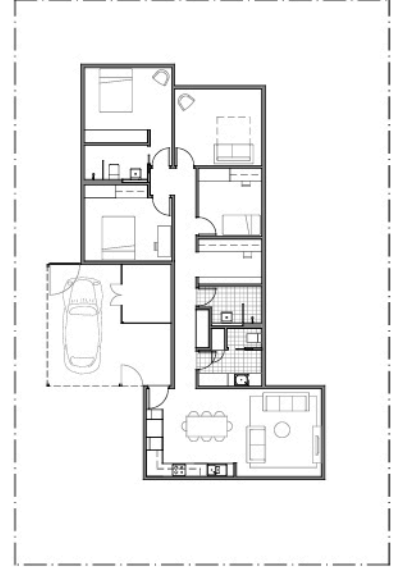
NORTH TO THE BACK



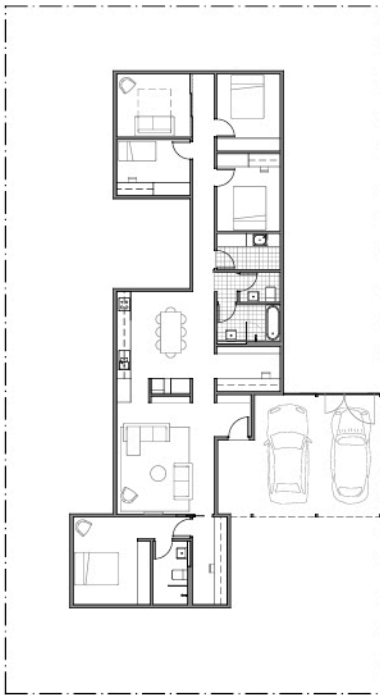
92 M²: 13 X 28 M



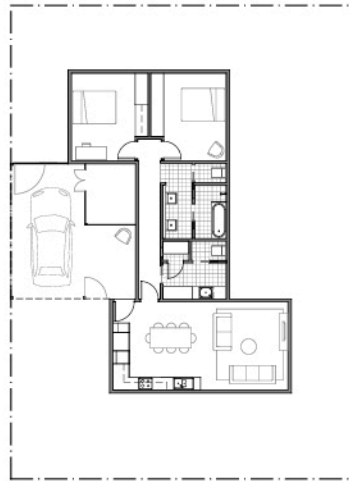
105 M²: 16 X 28 M



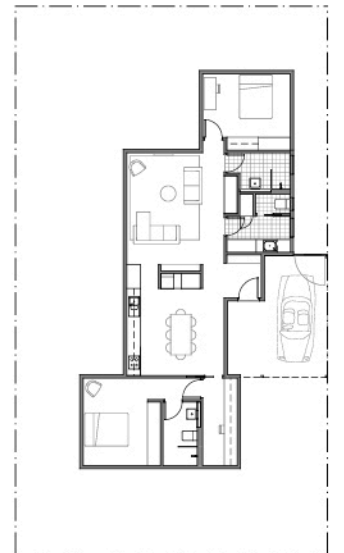
138 M²: 18 X 26 M



168 M²: 18 X 33 M



98 M²: 16 X 23 M

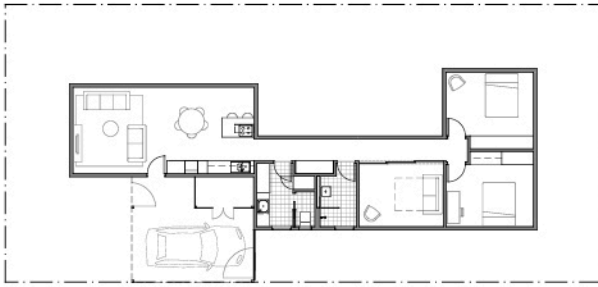


119 M²: 15 X 26 M

STREET



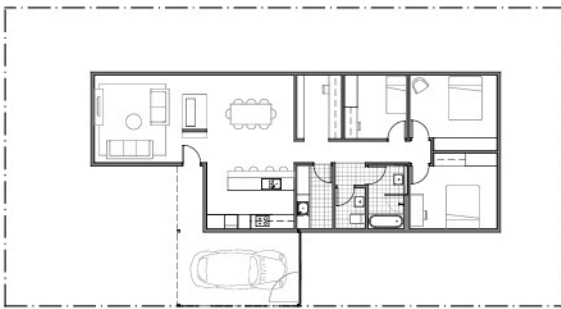
STREET



109 M²: 13 X 28 M



153 M²: 15 X 32 M



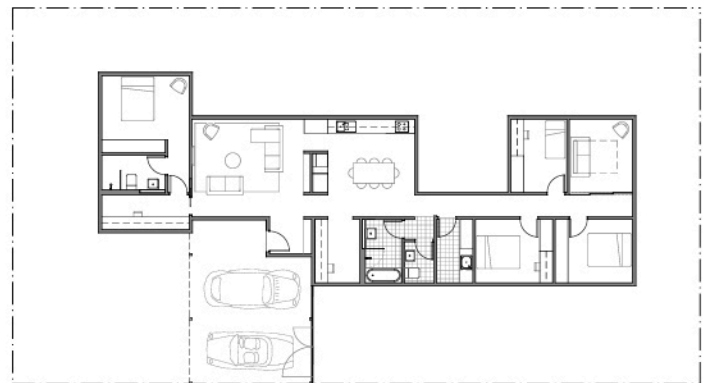
126 M²: 14 X 26 M



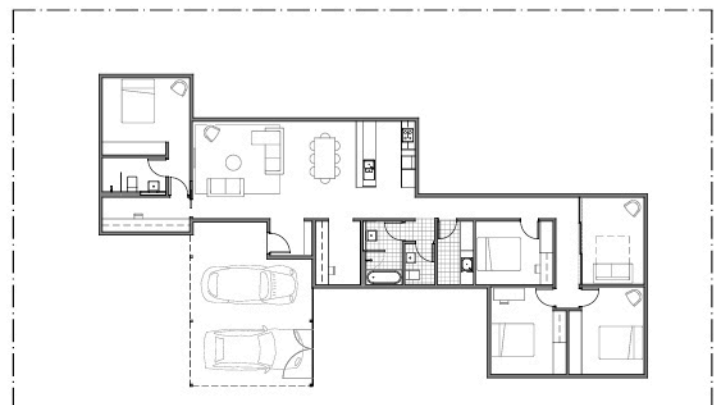
153 M²: 16 X 32 M

Blocks with a long axis running east-west (or with north to the side) are ideal for designing comfortable, sustainable homes in our climate. Modules can be arranged in a way that allows them all to soak up free warmth from the sun over winter and be protected from the scalding summer sun.

If you agree with the community members who attended our workshop series and think that the key ingredients of a good home are light, warmth, connection to outdoors and good social space, then a block with north to the side is the best option for you.



168 M²: 18 X 32 M



181 M²: 19 X 33 M